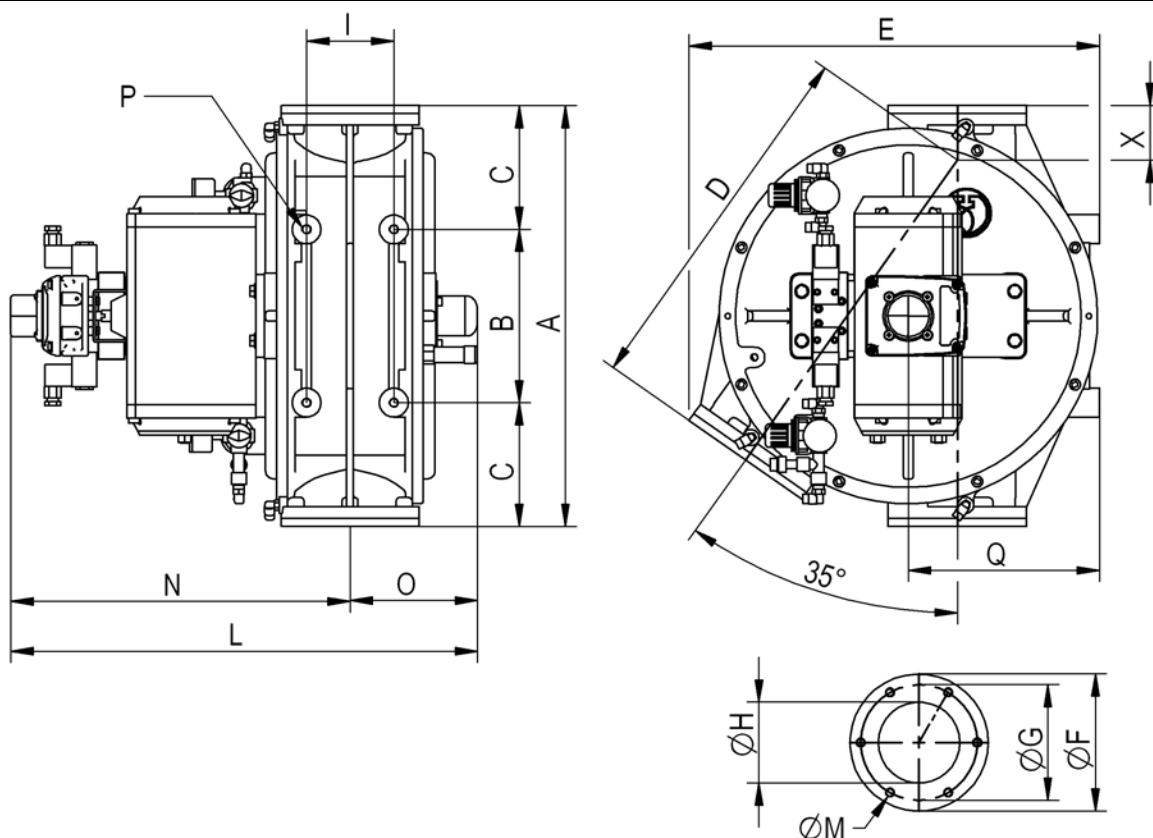
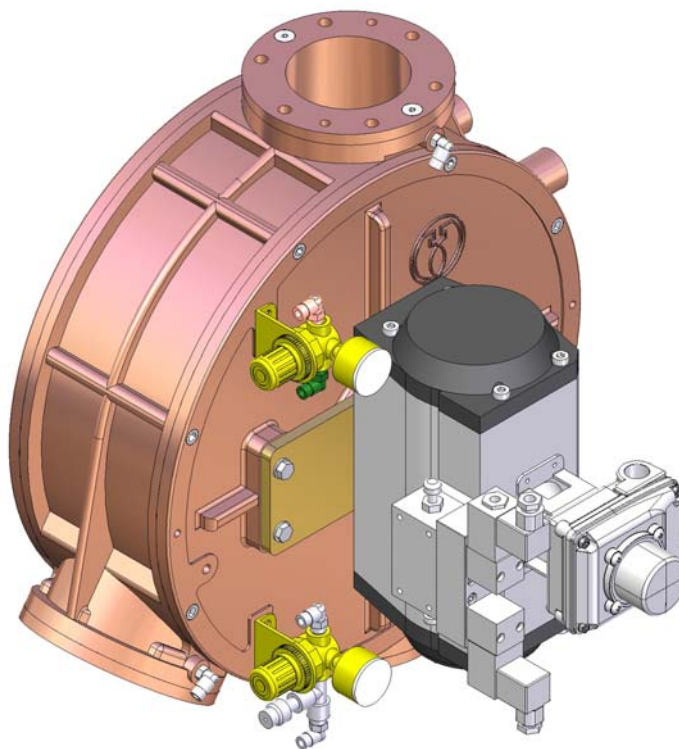


The new two way diverting valve type “VPT” with double pipe is suitable for pneumatic conveying lines with low, medium or high pressure. It can be used to convey powders or grains even if abrasive and it's manufactured in the aluminium built version (also nickel plated) or with parts in contact with the product in stainless steel AISI304/316 or hardened steel. It's possible to choose between two different versions, one with static seals for low / average pressure the other with pneumatic seals for high pressure systems both with pneumatic working. Conformity to CE ATEX 94/9/EC (1D inside – 2GD / 3GD outside) available on request.

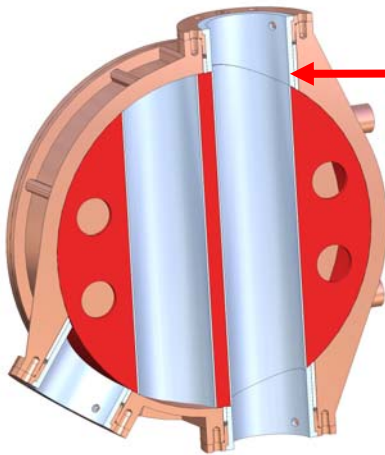
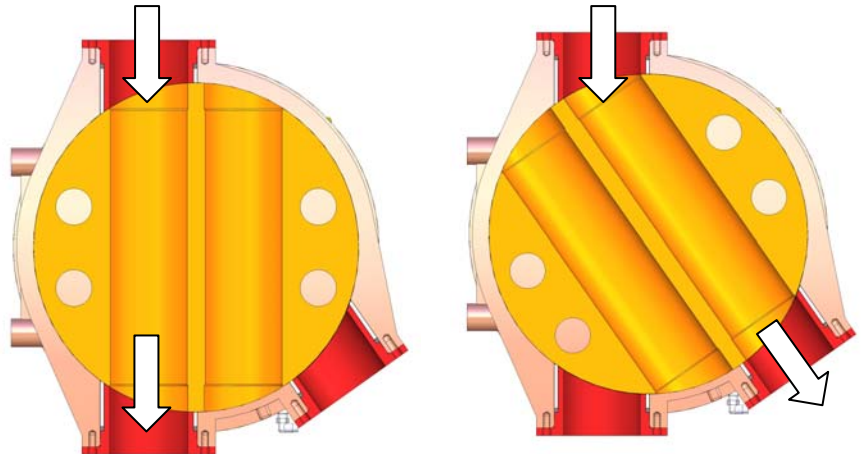


DN	A	B	C	D	E	ØF	ØG	ØH	I	L	ØM	N	O	P	Q	X
65																
100	510	210	150	443	494	166	140	98	105	561	11	408	153	M12	153	66
120	615	265	175	540	598	192	165	121	135	601	11	428	173	M14	283	75
150																

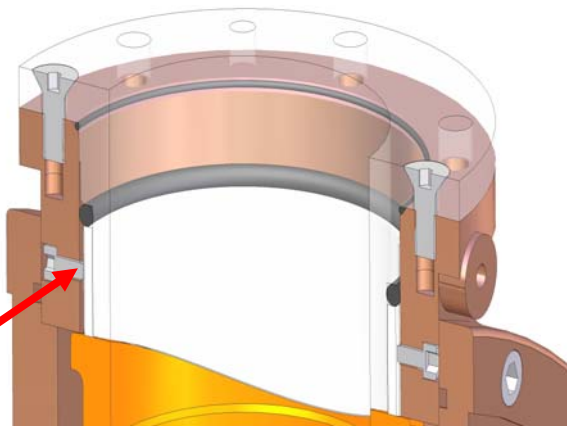
\* We reserve the right to change any dimension without notice.

## Main improvements:

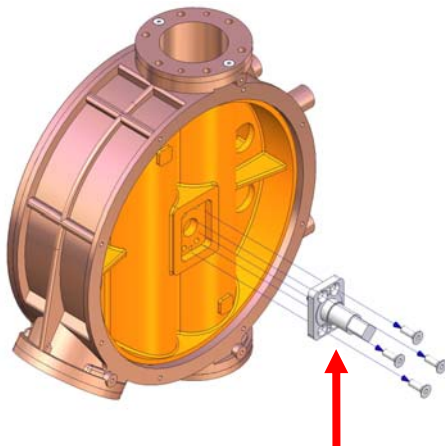
- **Double pipe:** more resistance against wear thus increasing life-cycle of the machine
- **Higher speed** to change position due to the low rotating angle ( $35^\circ$ )



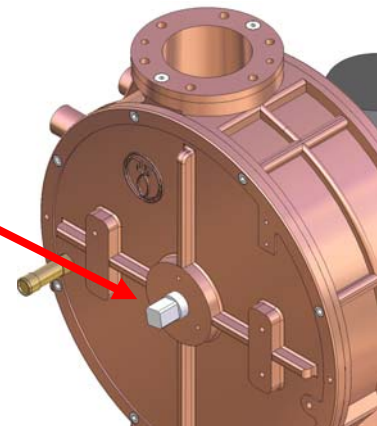
- **Capsulated high thickness pipe:** in stainless or hardened steel for food compatibility or more resistance against wear



- **Seals:** new seals (food approved) with pins for more precision and tightness



- **Double protruding shaft:** possibility to reverse the actuator position in a very short time



- **Replaceable shaft ends** : no longer necessary to replace the entire drum in case of damage or breakage of the shaft end